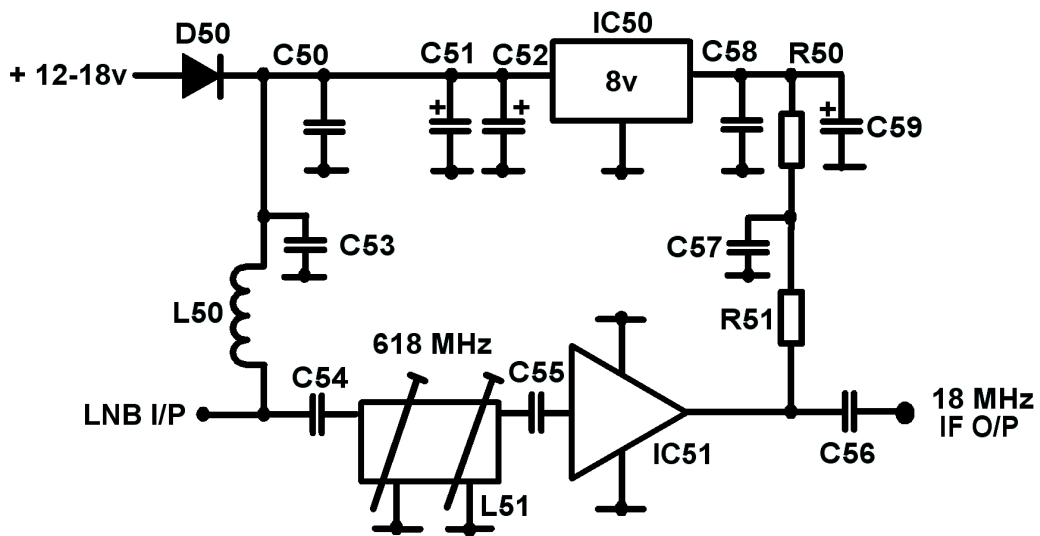
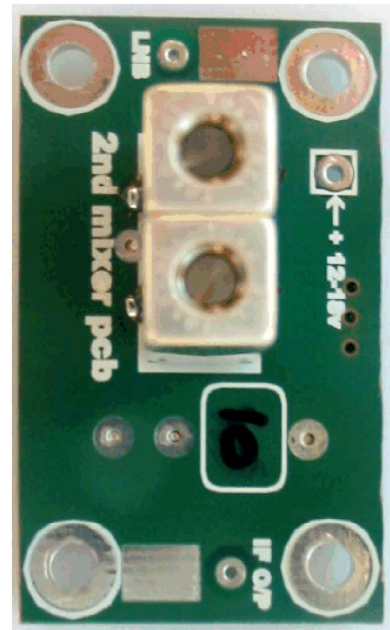
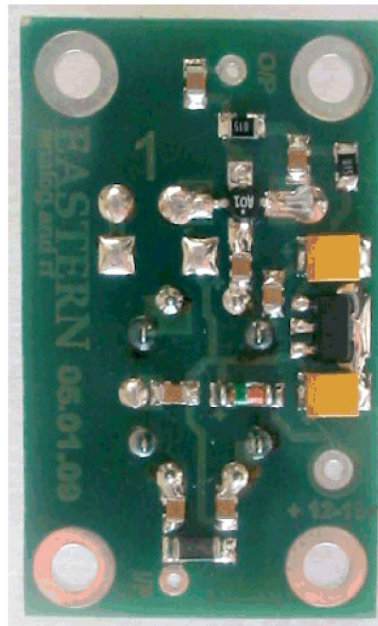
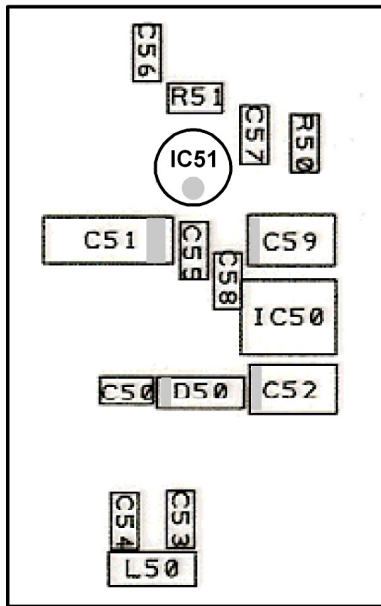


Parts-list and sma placement for the '2<sup>nd</sup> mixer pcb' assy



**2nd mixer pcb**

C50	1nF 0805	C59	4.7uF tant	L50	10uH 1206
C51	Not fitted			L51	2739 0728J - blue
C52	4.7 uF tant	R50	47R 0805		
C53	1nF 0805	R51	47R 0805		
C54	1nF 0805				
C55	1nF 0805	IC50	TS78L05ACY		
C56	10nF 0805	IC51	MSA-0686		
C57	1nF 0805				
C58	1nF 0805	D50	LLSD103A-07		

**Notes:**

The 'dot' marking on the top of IC51 must be next to C55.

Ground plane side legend on pcb shows 'L50'. This should read 'L51'.

All four ground fixing holes for L51 had to be drilled out larger on issue 1 boards, so it is necessary to solder these both top side and bottom side.

The green band on D50 is the +ve end.

**Alignment**

Alignment is undertaken after fitting to the converter housing. However, a preliminary dc test can be made prior to this. To do so, apply 12v to the board and check the following:

- a) The 5v rail (junction of IC50/C59) is  $5\text{v} \pm 0.2\text{v}$
- b) The output pin of IC51 (junction with C56) is  $3.5\text{v} \pm 0.2\text{v}$